

Isco Software Updates

Flash Memory and the UPDATE Disk

Many Isco instruments use a type of memory called a Flash EPROM. Unlike earlier EPROMs that require UV erasure and were not easily field-replaced, the Flash EPROM lets you upgrade the software in the instrument without opening the unit or returning it to the factory.

The disk contains UPDATE, a small DOS program specifically for Flash memories, and a set of software files to update the Flash EPROM. The disk may also contain file(s) with a ".txt" extension that provide release information about the software files.

The disk is labeled with:

- The instrument series number
- The software revision number for each instrument in the series
- The part number of the disk

This instruction sheet assumes that you have a cable to connect the computer to the instrument. If you do not, you can order one from your Isco sales representative, or from the factory. The part number is on the back of this page.

Before attempting to update a system please read the following:

NOTE

Updating the instrument will erase the data stored in memory. This includes both programming selections and readings stored in the instrument's memory. The program will revert to the default (factory) settings, and other stored data will be lost altogether.

Before you run UPDATE, record your program selections. You can then reprogram the machine easily after you have installed the update. If you need to save the readings, collect the data before attempting to update the instrument's software.

Running UPDATE

1. Plug the computer connect cable into the serial port on your computer and the Interrogator connector on the instrument. (The interrogator connector label shows a drawing of a laptop computer.)

2. Insert the UPDATE disk in the computer's floppy disk drive, and change the DOS prompt to the floppy drive's prefix, for example: C:\> A:

3. At the DOS prompt, type: UPDATE

The windows in UPDATE contain the instructions for updating the instrument.

These instructions for running UPDATE assume you are running UPDATE from the UPDATE disk. If you copy the disk's contents to your hard drive, first create a directory for the files. **The UPDATE program and the instrument software files must be in the same directory.** Furthermore, the directory containing UPDATE and the update files must be the current directory when you run UPDATE.

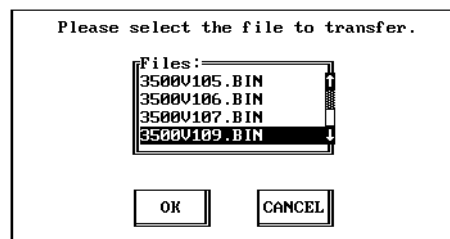
If you receive several update disks over time, always copy the update files and the UPDATE program to the directory you have created for this on your computer. That will ensure you always have the current version of the UPDATE program, as well as the new instrument software files.

Isco ships UPDATE and the update software on **3½ inch, high density disks**. To obtain assistance with software updates, contact the Isco Customer Service Department.

Isco Customer Service
P.O. Box 82531
Lincoln, NE 68501 USA

Telephone: (800) 228-4373
Outside USA, Canada, & Mexico: (402) 464-0231
FAX: (402) 465-3022

File Selection

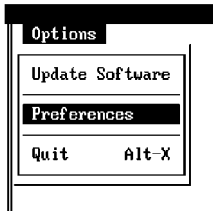


This window appears only when the directory or disk contains more than one version of the update files and the Preferences option for Show Update File is "All Update Files." It lists the update files in the directory. The first four numbers in the file name are the instrument's model number. The numbers following the "v" are the software version. If several versions appear in the window, select the file with the highest version number.

Setting Preferences

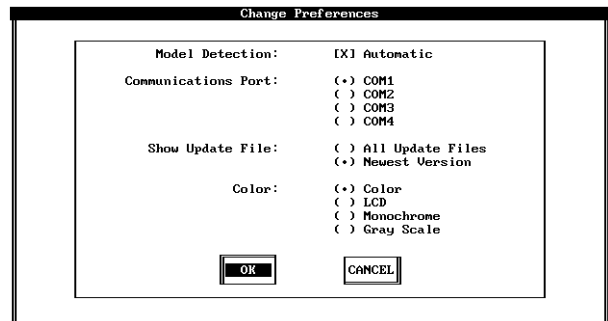
Update has preference settings. To change them:

1. Click CANCEL in the Introduction window.
2. Select Preferences from the Options menu.



3. Choose from the listed preferences and select OK when done.
- Select the Com Port you are using for the Computer Connector Cable.

- Select Newest Version to see only the most recent update files in a directory: Select All Update Files to see all update files.
- Select the color scheme that best matches your monitor.



Minimum DOS and Computer Hardware Requirements

DOS	DOS 3.3 or later versions	DOS 5.0 or later versions recommended. Microsoft Windows not required.
CPU	80286, 80386, 80486	IBM PC or compatible. 80386 or 80486 recommended. (Must operate at 19,200 baud when communicating through the serial port.)
	640 kilobytes RAM (Random Access Memory), minimum	
	Serial port	For connecting the computer to Isco flow meters, flow loggers, or samplers.
Keyboard	Any compatible keyboard	
Hard disk	Not required.	
Floppy disk	3 ¹ / ₂ -inch floppy drive (1.44 MB)	At least one floppy disk drive.
Monitor	LCD, Gray Scale, Color, or Monochrome	IBM CGA, EGA, or VGA compatible.
Mouse	Microsoft®-compatible mouse	Optional. Mouse recommended.
Cabling	Isco Computer Connect Cable (9-pin: part #60-2544-044) (25-pin: part #60-2544-040)	For connecting the computer to flow meters, flow loggers, or samplers.

FLOWLINK® is a registered trademark of Isco, Inc.
 IBM PC® and DOS® 3.3 are trademarks of International Business Machines Corporation.
 Microsoft® and Windows® are registered trademarks of Microsoft Corporation.